

If you are placing equipment into an area which has certain standards or codes other than those normally accepted in the food - service industry (NSF, UL, etc.) Delfield must be advised of those specifications in detail before fabrication of the equipment in order that we may quote additional costs if any. Failure to notify The Delfield Company before fabrication releases us from any obligation to modify our standards without any additional charges.

Technical drawing of a three-door refrigerator, showing the front and top views with dimensions in centimeters.

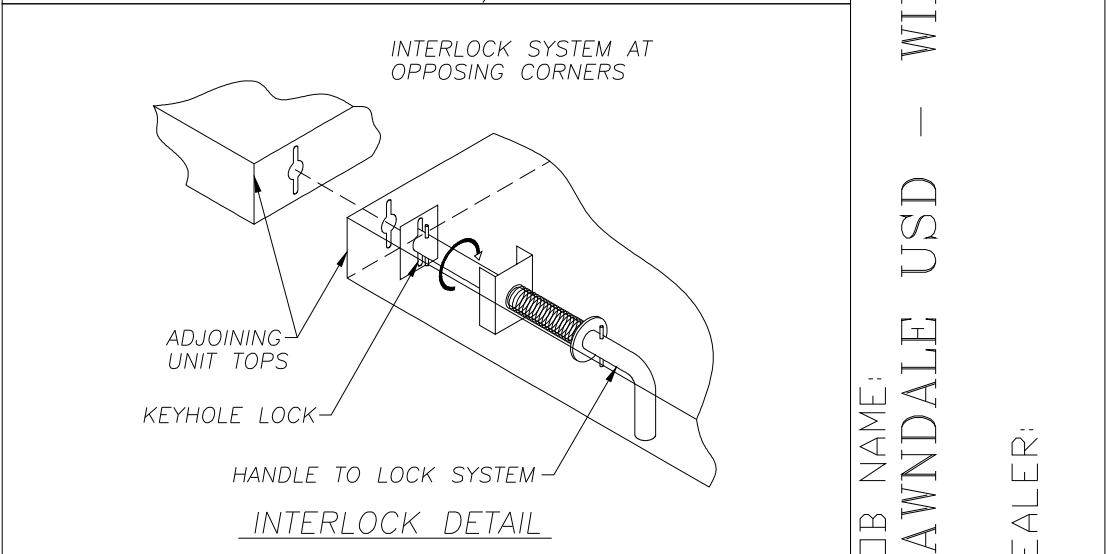
**Dimensions:**

- Width:** 82.00 (left door), 190.00 (middle door), 78.00 (right door), 30.00 (total depth).
- Height:** 56.00 (total height), 30.00 (door height), 12.00 (top/bottom panel height), 1.00 (top/bottom panel thickness).

**Internal Layout:**

- Left Door:** Features a single horizontal shelf.
- Middle Door:** Features a single horizontal shelf and a single vertical shelf.
- Right Door:** Features a single horizontal shelf.
- Interior:** Includes a single horizontal shelf and a single vertical shelf.

3



2



SKU	000-000-40014EKJ1
MODEL	N0. SFTS2-64-NUP ITEM NO. 1
-DELFIELD FLEXITOP -DOUBLE TIER HOT AND FROST COMBO COUNTER -(2) 5126 LONG BY 2338 WIDE TOPS -RECESSED TOP FOR SHEET PANS BY OTHERS -(6) SHEET PAN CAPACITY -115V-60HZ-1PH-120V-14HP -C-CORD AND PLUG INFORMATION** -NEMA NO. 5-15 PLUG WITH 9FT CORD 115V-60HZ-1PH-1232A -PROVIDE SECOND TIER WITH: -S/S OVERSHELF -0.25 TEMPERED GLASS FRONT(S) -(2) 4800 LED LIGHT (120V-0.16A EACH) -(2) S/S CONSTRUCTED ROLLED "V" TRAY SLIDE -MOUNTED ON FOLD-DOWN BRACKETS	

SKU NO. 000-40014EKJ2	
MODEL NO. SCSC-60-BP	ITEM NO. 2
COLD PAN SERVING COUNTER	
-52.00 BY 21.62 BY 7.00 MECH.	
COOLED COLD PAN WITH DRAIN	
115V-60C-1PH-3.2A-1/4HP	
-4" DEEP PANS BY OTHERS	
**CORD AND PLUG INFORMATION**	
-NEMA NO. 5-15 PLUG WITH 9FT CORD	
115V-60C-1PH-3.44A	
-(2) S/S CONSTRUCTED ROLLED "V"	
TRAY SLIDE	
-MOUNTED ON FOLD-DOWN BRACKETS	

SKU NO. 000-CCA14EKJ2	
MODEL NO. DCFSKD	
-SINGLE TIE, DOUBLE SERVICE FIXED SNEEZ GUARD FRONTS -SUPPORTS WITH S/S FINISH AND MOUNTING HARDWARE -0.38 TEMPERED GLASS TOP -0.25 TEMPERED GLASS FRONT AND ENDS	
-(1) 36.00 LED LIGHT (120V-0.12A)	

SKU NO. 009-40014EKJ3	
MODEL NO. SCS-30	ITEM NO. 3
-CASHIER COUNTER	
-3 IN DIAMETER HOLE WITH GROMMET	
IN TOP	
-S/S SHELF AND LOCKING DRAWER	
(1) 120V-15A DUPLEX (GFCI) RECEPTACLE, NEMA #5-15R WITH 10A BREAKER	
**CORD AND PLUG INFORMATION**	
-NEMA NO. 5-15 PLUG WITH 9FT CORD	
115V-60C-1PH-10A	
(2) S/S CONSTRUCTED ROLLED "V" TRAY SLIDE -MOUNTED ON FOLD-DOWN BRACKETS	
-ACCESS DOOR WITH LOCK	

SHEET NUMBER: <u>1</u> OF <u>1</u>	DRAWN BY: CL
SJ NUMBER:	APPROVED BY: C. LOBDELL
DRAWING NUMBER: 1885123_001A	DATE: 6/9/25 SCALE: 1/2" = 1'-0"

***Delfield®***

