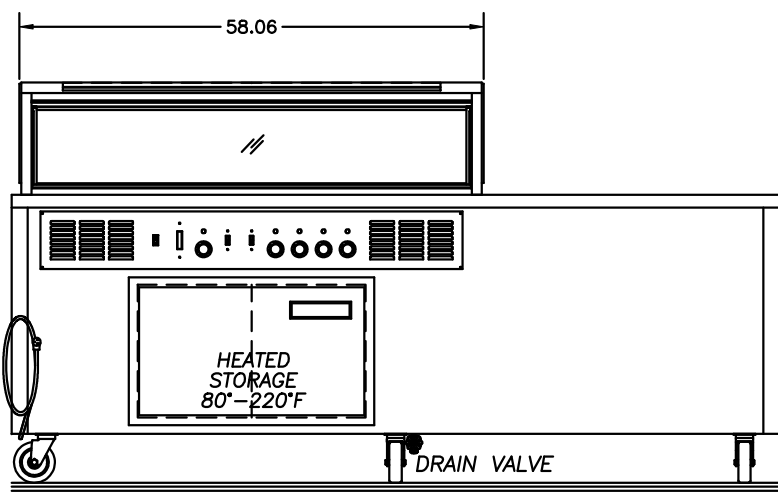
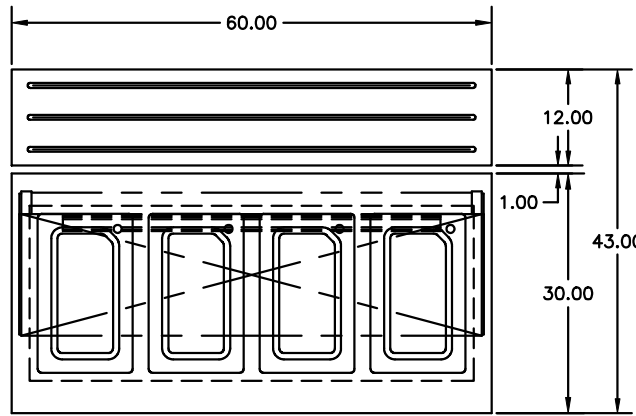


1

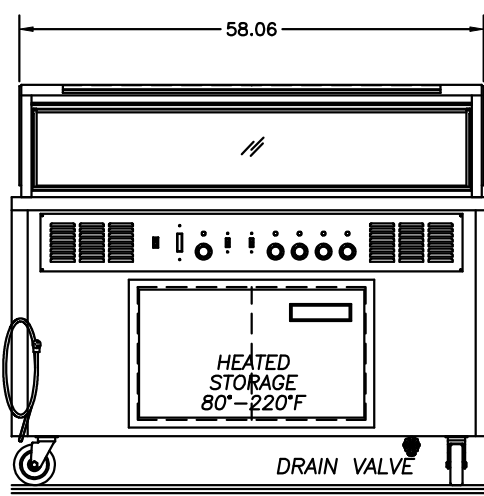


1

SKU NO. 000-40014ESW1
MODEL NO. SH-4 ITEM NO. 1
-HEATED SERVING COUNTER
-ELECTRIC (WET OR DRY) HOT FOOD TABLE WITH DRAINS AND MANIFOLD 208/230V-60C-1PH-22.0A
-DOUBLE SECTION HEATED STORAGE -240V-4.0A
##CORD AND PLUG INFORMATION##
-NEMA ND. L14-30 "TWIST LOCK" PLUG WITH 9FT. CORD
120/208-230V-60C-1PH-22.16A
-S/S CONSTRUCTED ROLLED "V" TRAY SLIDE
-MOUNTED ON FOLD-DOWN BRACKETS
-S/S CONSTRUCTED SINGLE TIER COUNTER PROTECTOR
-18 GAUGE S/S TOP SHELF
-FULL .025 SAFETY GLASS FRONTS
-.025 ACRYLIC ENDS
-1.25 SQUARE S/S TUBING LEGS
-(1) 48.00 LED LIGHT (120V-0.16A)

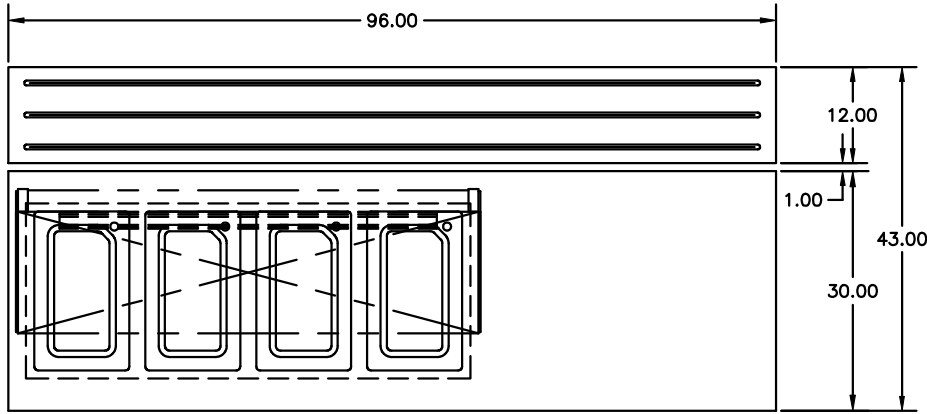
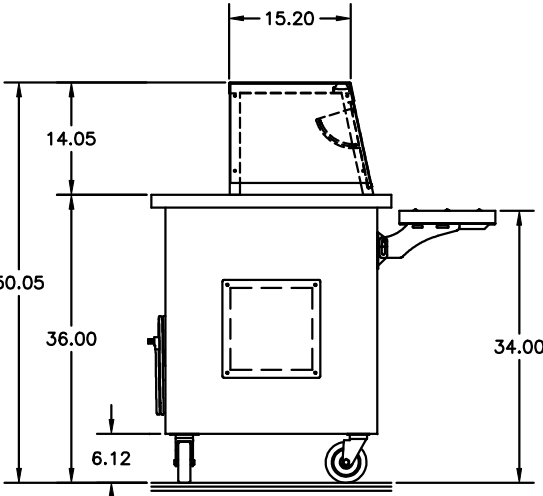


2

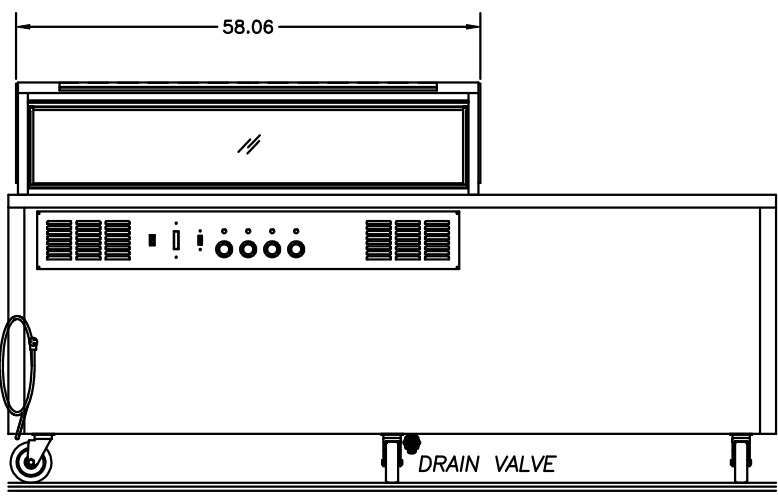


2

SKU NO. 000-40014ESW2
MODEL NO. SH-4 ITEM NO. 2
-HEATED SERVING COUNTER
-ELECTRIC (WET OR DRY) HOT FOOD TABLE WITH DRAINS AND MANIFOLD 208/230V-60C-1PH-22.0A
-DOUBLE SECTION HEATED STORAGE -240V-4.0A
##CORD AND PLUG INFORMATION##
-NEMA ND. L14-30 "TWIST LOCK" PLUG WITH 9FT. CORD
120/208-230V-60C-1PH-22.16A
-S/S CONSTRUCTED ROLLED "V" TRAY SLIDE
-MOUNTED ON FOLD-DOWN BRACKETS
-S/S CONSTRUCTED SINGLE TIER COUNTER PROTECTOR
-18 GAUGE S/S TOP SHELF
-FULL .025 SAFETY GLASS FRONTS
-.025 ACRYLIC ENDS
-1.25 SQUARE S/S TUBING LEGS
-(1) 48.00 LED LIGHT (120V-0.16A)

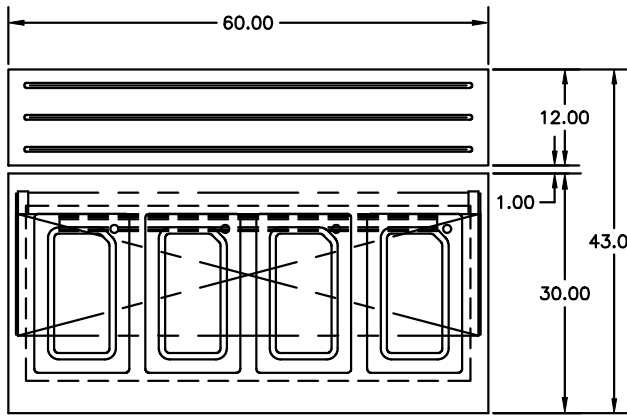


1ALT

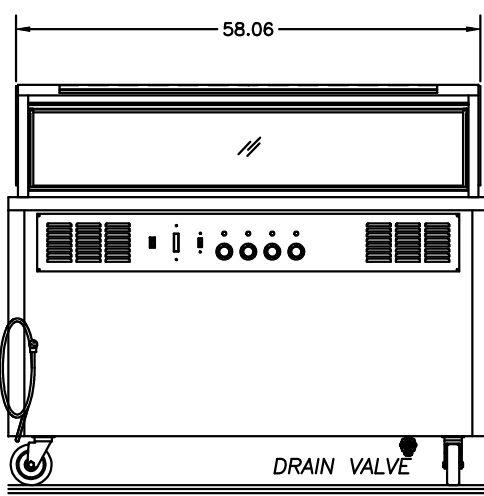


1ALT

SKU NO. 000-40014ESW4
MODEL NO. SH-4-NU ITEM NO. 1ALT
-HEATED SERVING COUNTER
-ELECTRIC (WET OR DRY) HOT FOOD TABLE WITH DRAINS AND MANIFOLD 208/230V-60C-1PH-22.0A
##CORD AND PLUG INFORMATION##
-NEMA ND. L14-30 "TWIST LOCK" PLUG WITH 9FT. CORD
120/208-230V-60C-1PH-22.16A
-S/S CONSTRUCTED ROLLED "V" TRAY SLIDE
-MOUNTED ON FOLD-DOWN BRACKETS
-S/S CONSTRUCTED SINGLE TIER COUNTER PROTECTOR
-18 GAUGE S/S TOP SHELF
-FULL .025 SAFETY GLASS FRONTS
-.025 ACRYLIC ENDS
-1.25 SQUARE S/S TUBING LEGS
-(1) 48.00 LED LIGHT (120V-0.16A)



2ALT



2ALT

SKU NO. 000-40014ESW5
MODEL NO. SH-4-NU ITEM NO. 2ALT
-HEATED SERVING COUNTER
-ELECTRIC (WET OR DRY) HOT FOOD TABLE WITH DRAINS AND MANIFOLD 208/230V-60C-1PH-22.0A
##CORD AND PLUG INFORMATION##
-NEMA ND. L14-30 "TWIST LOCK" PLUG WITH 9FT. CORD
120/208-230V-60C-1PH-22.16A
-S/S CONSTRUCTED ROLLED "V" TRAY SLIDE
-MOUNTED ON FOLD-DOWN BRACKETS
-S/S CONSTRUCTED SINGLE TIER COUNTER PROTECTOR
-18 GAUGE S/S TOP SHELF
-FULL .025 SAFETY GLASS FRONTS
-.025 ACRYLIC ENDS
-1.25 SQUARE S/S TUBING LEGS
-(1) 48.00 LED LIGHT (120V-0.16A)

APPROVED FOR FABRICATION

- ☐ APPROVED
☐ APPROVED AS NOTED
☐ RESUBMIT

COMPANY: _____ DATE: _____

****ELECTRICAL NOTICE****

APPROVER OF FABRICATION AS DRAWN HEREIN ACKNOWLEDGES THE ELECTRICAL SPECIFICATIONS DEPICTED AND/OR NOTED CANNOT BE MODIFIED ONCE MANUFACTURING HAS BEGUN. APPROVER ACKNOWLEDGES THAT ANY ANY ALTERATIONS OF THE EQUIPMENT AFTER MANUFACTURING WILL VOID ALL WARRANTIES AND UL CERTIFICATION ON SAID EQUIPMENT. ANY EQUIPMENT ALTERED AFTER MANUFACTURING WILL BE SUBJECT TO UL REVIEW AND APPROVAL AT OWNER'S EXPENSE.

If you are placing equipment into an area which has certain standards or codes other than those normally accepted in the food — service industry (NSF, UL, etc.) Delfield must be advised of those specifications in detail before fabrication of the equipment in order that we may quote additional costs. If any, Failure to notify The Delfield Company before fabrication releases us from any obligation to modify our standards without any additional charges.

Shelleysteel®

NOTES:

- * TOPS ARE TO BE 14 GAUGE S/S
- * PROVIDE INTERLOCKS AS REQUIRED
- * ALL STANDARD LOCKING POLYURETHANE CASTERS
- * CORDS STANDARD WITH 90° PLUGS
- * UNITS SPECIFIED WITH DRAINS TO HAVE GATE VALVE AND GARDEN HOSE HOOK UP

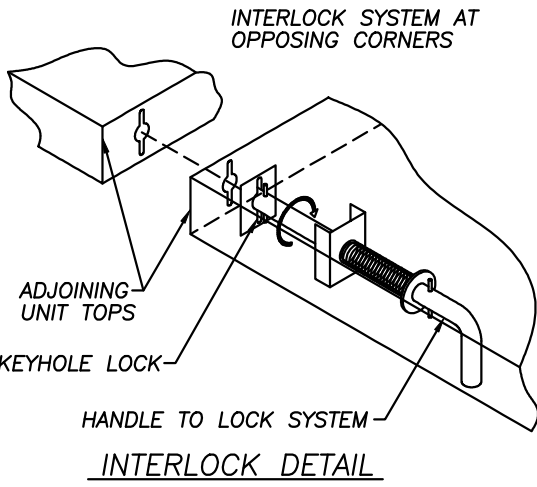
- * WHEN TRAY SLIDE/WORK SHELF BRACKETS ARE USED: FOLD DOWN BRACKETS ARE STANDARD UNLESS OTHERWISE REQUESTED

- * ALL 120 VOLT RECEPTACLES (15 AND 20 AMP) WILL BE GFCI PROTECTED DUPLEXES

ENVIRONMENTALLY FRIENDLY INSULATION

- * KYOTO PROTOCOL COMPLIANT
- * NON O.D.P. (OZONE DEPLETION POTENTIAL)
- * NON G.W.P. (GLOBAL WARMING POTENTIAL)
- * POLYURETHANE INSULATION

- * SHELLEYSSTEEL: PROVIDE ANGULAR FRAME BASES WITH REINFORCED STAINLESS STEEL SIDE PANELS



BY:					
DATE:					
NO. REVISIONS:	1	2	3	4	5

JOB NAME:
CANTON ELEMENTARY

DEALER:
SINGER

WEB SITE @ WWW.DELFIELD.COM
980 S. ISABELLA RD.
MT. PLEASANT, MT. 48858
(989) 773-7981 • 800-733-8821
THIS DRAWING IS THE PROPERTY
OF Delfield. IT IS NOT TO BE
USED OR REPRODUCED WITHOUT
THE EXPRESS WRITTEN
CONSENT OF Delfield.

Delfield®

SHEET NUMBER: 1 OF 1	DRAWN BY: DH
SJ NUMBER:	APPROVED BY: K.SALISBURY
DRAWING NUMBER: 1884596_001A	DATE: 5/30/25
	SCALE: 1/2" = 1'-0"

