

F16HD

31.5" (80cm) Deep Hinged Door Base Utility Stands

F16HD: 31.5" (80cm) Deep Hinged Door Base Utility Stands

Models

- | | | | |
|-----------|-------------------------------|-----------|-------------------------------|
| • F16HD19 | 19" hinged door utility stand | • F16HD73 | 73" hinged door utility stand |
| • F16HD27 | 27" hinged door utility stand | • F16HD81 | 81" hinged door utility stand |
| • F16HD38 | 38" hinged door utility stand | | |
| • F16HD46 | 46" hinged door utility stand | | |
| • F16HD54 | 54" hinged door utility stand | | |
| • F16HD64 | 64" hinged door utility stand | | |



F16HD73

Standard Features

- Top is constructed of 16-gauge stainless steel
- Work height is 36"
- Two pieces of 14-gauge U-channel are welded and glued under the top for strength and sound deadening
- Two shelves constructed of stainless steel with double hemmed nosing with 16-gauge under center shelf and one 20-gauge under bottom shelf and PL-400 sound-deadening adhesive
- 14-gauge leg rails that run the entire length of the unit
- Constructed with heavy gauge stainless steel fully welded in place
- Units are standard with unfinished ends, for finished end accessories see below
- One year parts and labor standard warranty

Options & Accessories

- Stainless steel back
- Stainless steel end
- Laminate facing
- Laminate end
- Locks
- Casters
- Urn trough
- Adjustable height casters

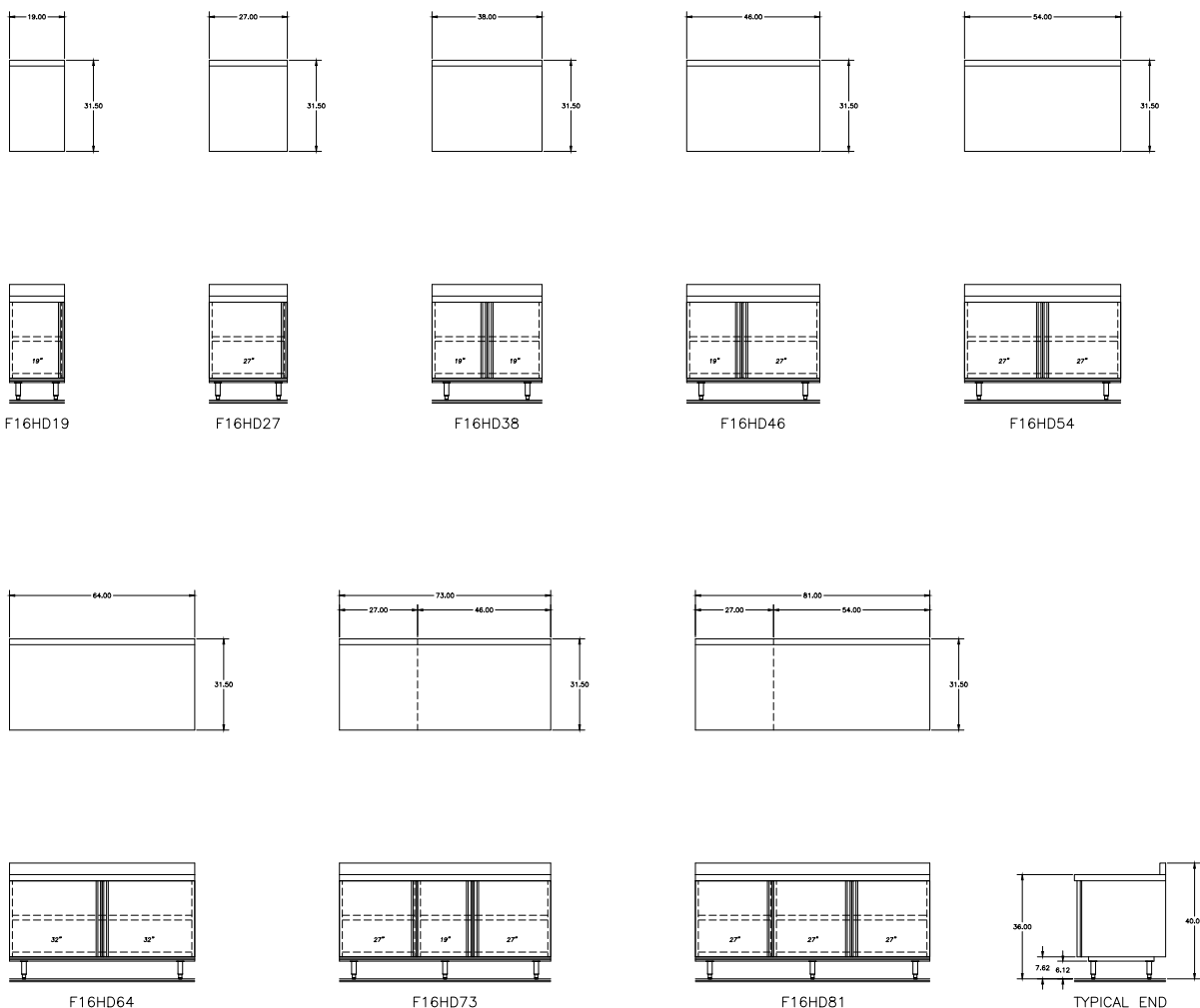
Specifications

Top is constructed of 16-gauge stainless steel, with integral 2.12" (5.4cm) square nosing on front and 4" (10.2cm) high by 2" (5.1cm) thick backsplash on rear.

Base has (2) 22-gauge stainless steel shelves. Shelf to have 5.62" (14.3cm) turn-up in rear. Hinged doors enclose cabinet front. Doors are constructed of 22-gauge stainless steel; end panels are unfinished.

Unit is mounted on 6.13" (15.6cm) high adjustable stainless steel legs.





Specifications					
Model	Length	Doors	# Of Shelves	Shelf Capacity	Ship Weight
F16HD19	19" (48cm)	19"	2	5.95ft ²	210lbs/95kg
F16HD27	27" (69cm)	27"	2	8.75ft ²	245lbs/111kg
F16HD38	38" (97cm)	(2) 19"	2	12.6ft ²	285lbs/129kg
F16HD46	46" (117cm)	19" & 27"	2	15.4ft ²	300lbs/136kg
F16HD54	54" (137cm)	(2) 27"	2	18.2ft ²	335lbs/152kg
F16HD64	64" (163cm)	(2) 32"	2	21.7ft ²	385lbs/174kg
F16HD73	73" (185cm)	19" & (2) 27"	2	24.85ft ²	420lbs/190kg
F16HD81	81" (206cm)	(3) 27"	2	27.65ft ²	485lbs/220kg

Delfield reserves the right to make changes to the design or specifications without prior notice.