

F17DD

Dry Drawer Equipment Stands

Models

- F17DD32 - 32" length dry drawer chef stand with (1) 32" drawer
- F17DD46 - 46" length dry drawer chef stand with (1) 19" and (1) 27" drawers
- F17DD54 - 54" length dry drawer chef stand with (2) 27" drawers
- F17DD64 - 64" length dry drawer chef stand with (2) 32" drawers
- F17DD73 - 73" length dry drawer chef stand with (1) 19" and (2) 27" drawers
- F17DD81 - 81" length dry drawer chef stand with (3) 27" drawers
- F17DD96 - 96" length dry drawer chef stand with (3) 32" drawers



F17DD54

Standard Features

- Top is stainless steel, with integral front marine edge
- Cutting board brackets with a reinforced 0.50" x 9.50" composite cutting board
- 6.12" adjustable full stainless steel legs
- One shelf constructed of stainless steel with double hemmed nosing are spot welded between the sides and supported with two 14-gauge U-channels with PL-400 sound deadening adhesive
- Full extension dry drawer system is sized to hold 12" x 20" x 4" or 6" deep hotel pans (by others)
- One year parts and labor standard warranty

Options & Accessories

- Stainless steel back
- Stainless steel end
- Laminate back
- Laminate end
- Casters
- Laminate facing (drawer base)
- Lock

Specifications

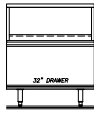
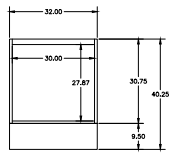
Stainless steel top is with integral front marine edge nosing and rear backplash. Stainless steel bars run front to back on both sides for support and spline purposes. Two pieces of U-channel are welded and glued with construction adhesive to the under side of the top for strength and sound deadening. Cutting board brackets are attached to each side and house a reinforced 0.50" x 9.50" composite cutting board.

Dry drawer system is sized to hold 12 x 20 x 4 or 6" deep hotel pans and smaller fractional pans. Drawer track assembly is constructed of stainless steel and each set of tracks are mounted in individual galvanized boxes. Intermediate tracks are removable without tools. Drawer boxes are designed with easy pan grip flanges. Tracks are designed with a stay shut feature

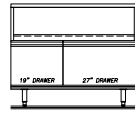
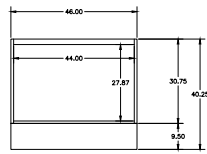
that holds the drawer tight to the base front on uneven floors. Exterior drawer fronts are made of stainless steel. .

Legs: Unit is mounted on 6.12" adjustable stainless steel legs.

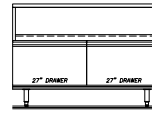
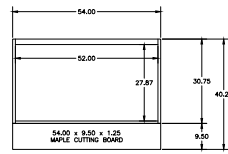




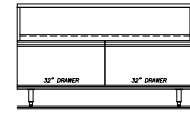
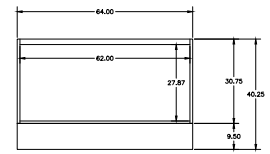
F17DD32



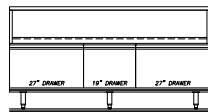
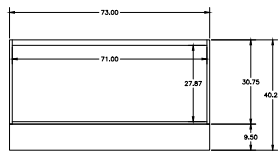
F17DD46



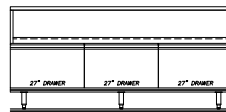
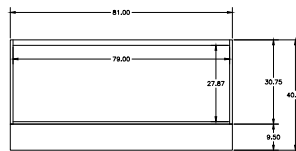
F17DD54



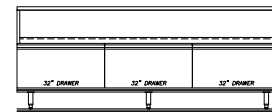
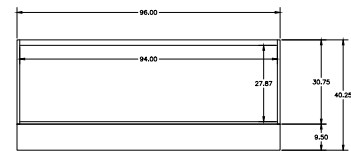
F17DD64



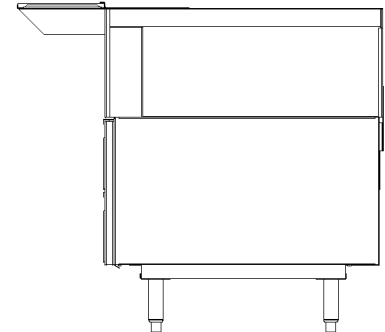
F17DD73



F17DD81



F17DD96



Specifications			
Model	Number Of Drawers	12"x20"x6" Pan Capacity	Ship Weight
F17DD32	(1) 32"	2	290lbs/131kg
F17DD46	(1) 19" (1) 27"	3	350lbs/159kg
F17DD54	(2) 27"	4	390lbs/177kg
F17DD64	(2) 32"	4	430lbs/195kg
F17DD73	(1) 19" (2) 27"	5	475lbs/215kg
F17DD81	(3) 27"	6	520lbs/236kg
F17DD96	(3) 32"	6	600lbs/272kg

Welbilt reserves the right to make changes to the design or specifications without prior notice.