

F170S

Open Shelf Equipment Stands

Models

- F170S36 - Open shelf equipment stand 36" in length
- F170S48 - Open shelf equipment stand 48" in length
- F170S60 - Open shelf equipment stand 60" in length
- F170S72 - Open shelf equipment stand 72" in length
- F170S84 - Open shelf equipment stand 84" in length
- F170S96 - Open shelf equipment stand 96" in length



F170S48

Standard Features

- Top is stainless steel, with integral front marine edge
- Standard units have unfinished ends
- Stainless steel cutting board brackets with a reinforced 0.50" x 9.50" composite cutting board
- 14-gauge leg rails that run the entire length of the unit
- Stainless steel bottom shelf
- 6.12" adjustable full stainless steel legs and bullet feet
- One year parts and labor standard warranty

Options & Accessories

- Stainless steel back
- Stainless steel end
- Laminate back
- Laminate end
- Casters

Specifications

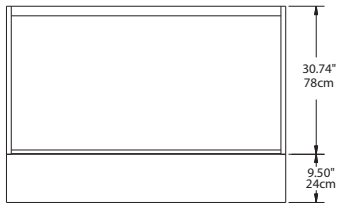
Top is constructed of stainless steel, with integral front marine edge nosing and rear backplash. Spline bars are made of stainless steel and run front to back on both the left and right stainless steel sides for support and spline purposes. Two pieces of C-channel are welded and glued with construction adhesive to the under side of the top for strength and sound deadening. As a standard, cutting board brackets are attached to each side and house a reinforced 0.50" x 9.50" composite cutting board.

Base is constructed of stainless steel sides. One bottom shelf constructed of stainless steel with double hemmed nosing is spot welded between the sides and braced for extra support.

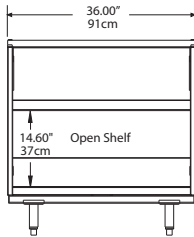
Unit is supported with two leg rails that run the entire length of the unit. Leg rails are welded to the bottom side of the unit and are tied together with two braces running front to back. Caster/leg boxes are welded inside the leg rail and 6.12" adjustable legs are mounted as standard with (4) 5/16" bolts.



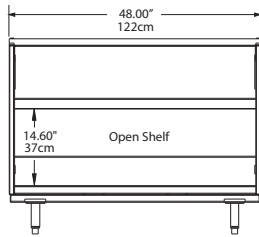
F170S: Open Shelf Equipment Stands



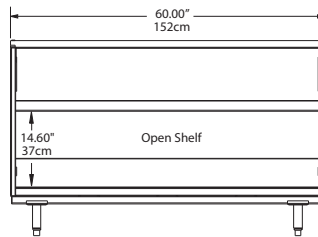
Plan View
All Models



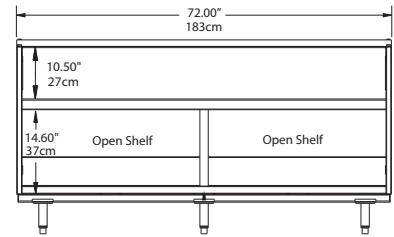
Elevation View
F17OS36



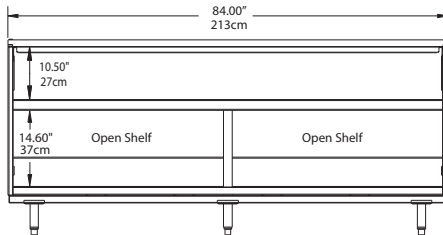
Elevation View
F17OS48



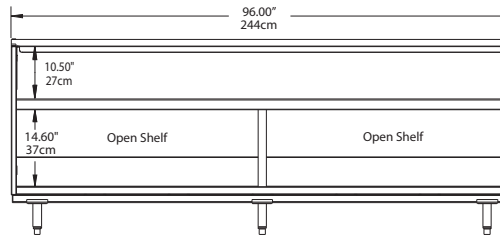
Elevation View
F17OS60



Elevation View
F17OS72

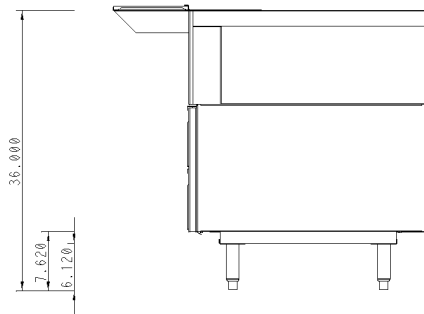


Elevation View
F17OS84



Elevation View
F17OS96

NOTE: Inside Shelf
Width Is 2" Less Than
Overall Length



Specifications				
Model	Number of Shelves	Shelf Ft2	Model Length	Ship Weight
F17OS36	1	5.95	36.00" / 91cm	200lbs/ 91kg
F17OS48	1	8.00	48.00" / 122cm	250lbs/ 113kg
F17OS60	1	10.15	60.00" / 152cm	300lbs/ 136kg
F17OS72	1	12.25	72.00" / 183cm	350lbs/ 159kg
F17OS84	1	14.36	84.00" / 213cm	400lbs/ 181kg
F17OS96	1	16.46	96.00" / 244cm	475lbs/ 215kg

Welbilt reserves the right to make changes to the design or specifications without prior notice.