

# Diagram

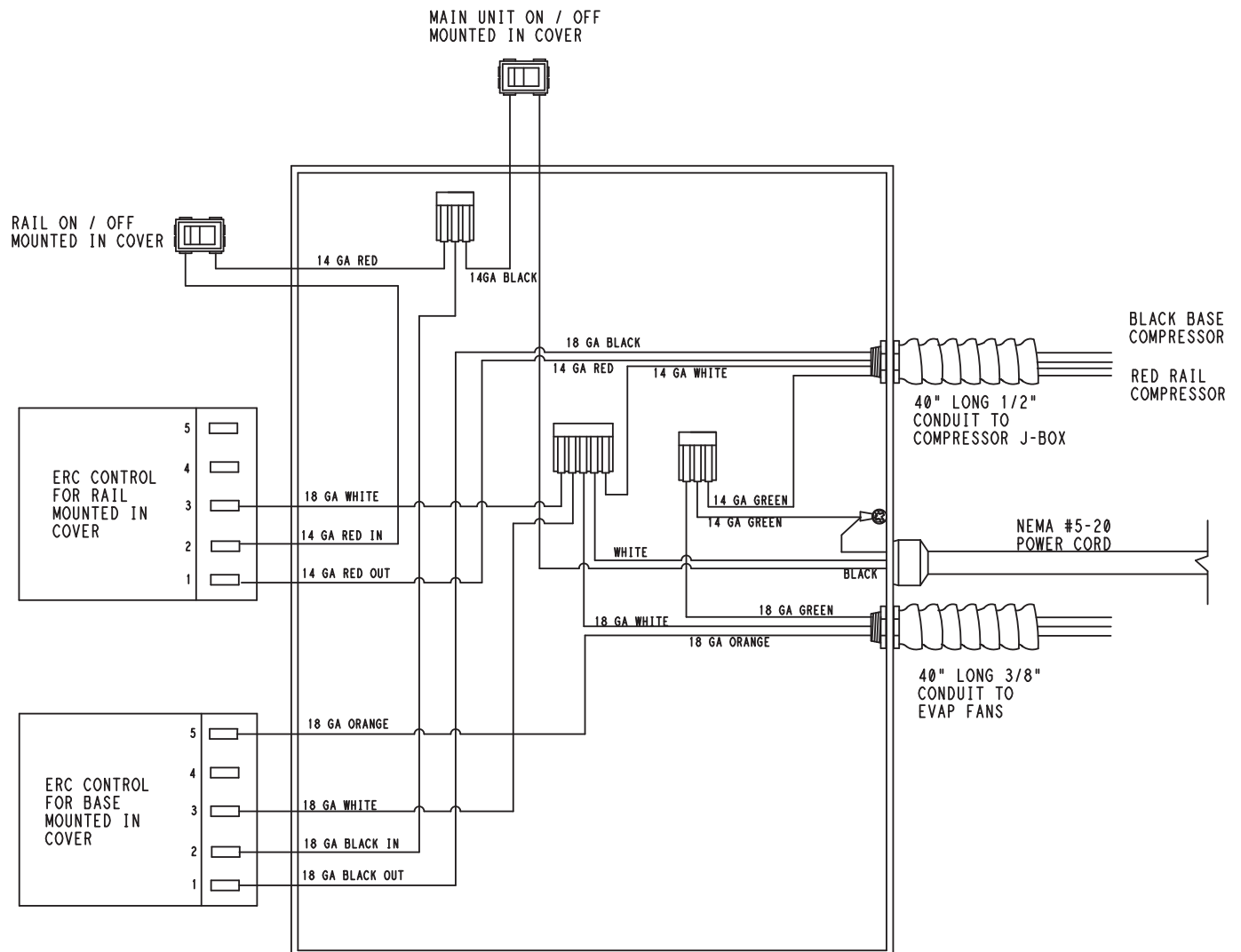
## Refrigerated Dual Rail

### F18PDV SERIES MODELS

#### F18PDV Series Self-Contained Dual Rails

NOTE: Built after 3-30-17.

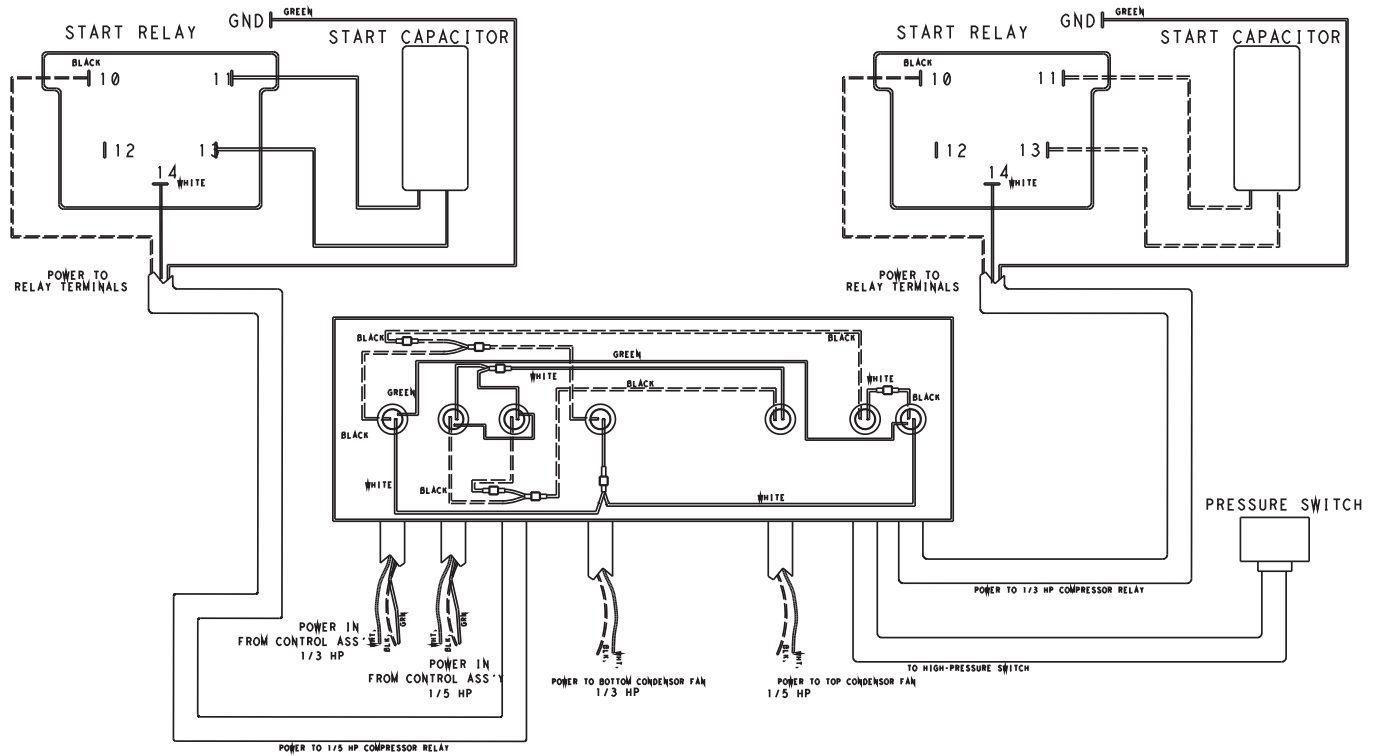
#### Control Schematic



## F18PDV Series Self-Contained Dual Rails

NOTE: Built after 3-30-17.

### Compressor Schematic



**F18PD Series Self-Contained Dual Rails**

NOTE: Built before 3-30-17.

