

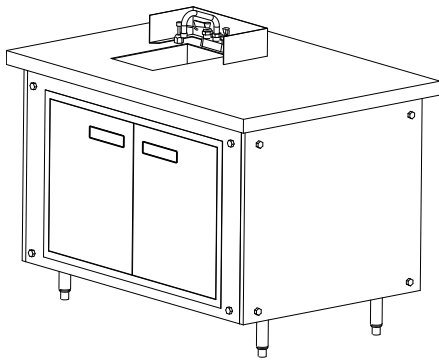
Project _____
Item _____
Quantity _____
CSI Section 11400
Approved _____
Date _____

Concepts® Serving Systems

Handsink Modules

Models

- DCHS-DI Drop in handsink module
- DCHS-51 Handsink module



DCHS-51

Standard Features

- Heavy duty stainless steel top
- Reinforced stainless steel front and rear removable panels
- Heavy duty base support structure
- Standard on 6" legs
- 36" work height
- Three sided removable stainless steel riser
- Deck mount faucet
- Finished stainless steel side panels
- Soap dispenser
- On board water pump
- On board 2 1/2 gallon water heater
- (2) 5 gallon fresh water containers
- (2) 7 1/2 gallon waste water containers
- Cord and 5-15P plug
- 9" x 14" x 5" sink
- One year parts and labor standard warranty

Options & Accessories

- Granite, Hanstone and Solid Surface top materials
- Laminated base and end panels
- Décor panels
- Graphics packages
- Fixed or adjustable height casters (stand alone units only)
- Kickplates (units with legs only)
- Trayslides
- Paper towel holder

Specifications

Exterior body is constructed of 0.75" Melamine reinforced front and rear panels with 22 gauge stainless steel skin and 1" polyethylene horizontal rib supports. Horizontal brace on rear is constructed of 18 gauge galvanized steel. The exterior ends are finished.

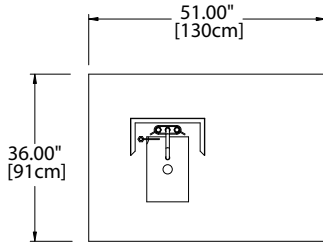
Exterior top is constructed of 14 gauge stainless steel. Horizontal top supports on front and rear are constructed with 18 gauge galvanized steel. Top end supports are 12 gauge stainless steel.

Interior base bottom is constructed of 16 gauge galvanized steel. Vertical base support braces are 14 gauge galvanized steel.

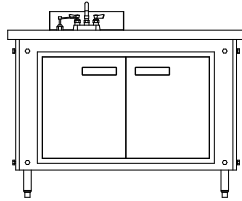
Legs: Bases mounted on 6.12" adjustable legs.



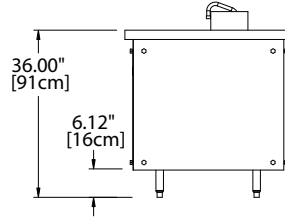
Concepts® Serving Systems: Handsink Modules



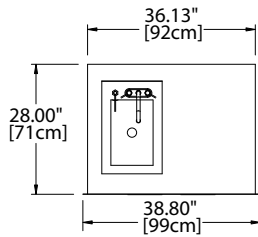
DCHS-51 Plan View



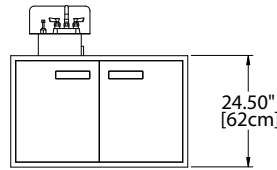
DCHS-51 Elevation View



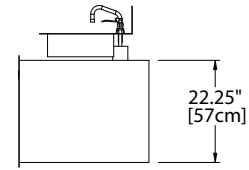
DCHS-51 Right Side View



DCHS-DI Plan View



DCHS-DI Elevation View



DCHS-DI Right Side View

INSTALLATION NOTE:

Refrigeration system is designed so that air will flow under the unit, through the compressor area and out the front of the unit. Any restriction to this air flow path will void the warranties.

PLEASE NOTE:

Air flow through the louver on the back of the unit is not necessary for operation, however, any air which passes through the louver is beneficial.

Specifications						
Model	Length	Depth	Height	V/Hz/Ph	Amps	Ship Weight
DCHS-51	51.00"	36.00"	36.00"	120/60/1	15	454lbs/206kg
DCHS-DI	38.13"	28.00"	22.00"	120/60/1	15	220lbs/100kg

Welbilt reserves the right to make changes to the design or specifications without prior notice.