

Project \_\_\_\_\_  
Item \_\_\_\_\_  
Quantity \_\_\_\_\_  
CSI Section 11400  
Approved \_\_\_\_\_  
Date \_\_\_\_\_

# F16SD

## 31.5" (80cm) Deep Sliding Door Utility Stands

### Models

- F16OS36 - 36" length open shelf utility stand
- F16OS48 - 48" length open shelf utility stand
- F16OS60 - 60" length open shelf utility stand
- F16OS72 - 72" length open shelf utility stand
- F16OS84 - 84" length open shelf utility stand
- F16OS96 - 96" length open shelf utility stand



F16SD36

### Standard Features

- Top is constructed of 16-gauge stainless steel
- Work height is 36"
- Two pieces of 14-gauge U-channel are welded and glued under the top for strength and sound deadening
- Two shelves constructed of stainless steel with double hemmed nosing with bracing under center shelf and bracing under bottom shelf and sound-deadening adhesive
- 14-gauge leg rails that run the entire length of the unit
- Handles are recessed black plastic and held in with a positive lock system
- Units are standard with unfinished ends
- One year parts and 90 day labor standard warranty

### Options & Accessories

- Stainless steel back
- Stainless steel end
- Laminate facing
- Laminate back
- Laminate end
- Fixed or adjustable height casters
- Urn trough

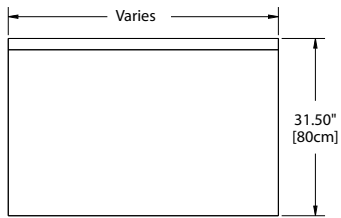
### Specifications

**Top** is constructed of 16-gauge stainless steel, with integral 2.12" (5cm) square nosing on front and 4" (10cm) high by 2" (5cm) thick backsplash on rear.

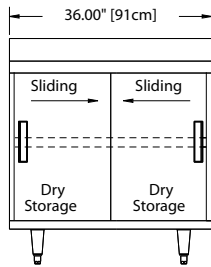
**Base** is provided with (2) 22-gauge stainless steel shelves. Shelves have a 5.62" (14cm) turn-up in rear. (2) sliding doors mounted on rollers to overhead track enclose cabinet front. Doors are constructed with 22-gauge stainless steel fronts and 22-gauge galvanized back panel. Shelf sides are constructed of stainless steel. Optional ends are constructed of 22-gauge stainless steel.

**Legs:** Unit is mounted on 6.13" (16cm) high adjustable stainless steel legs.

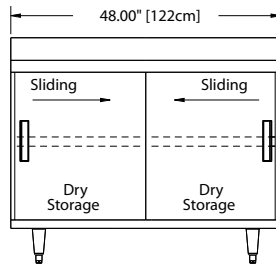




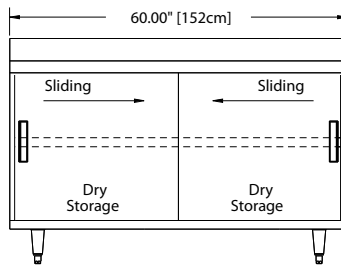
Plan View  
All Models



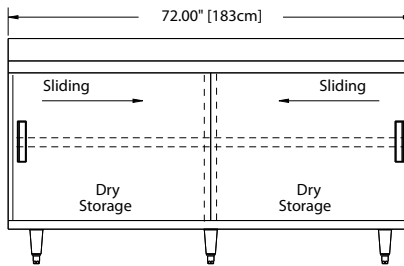
Elevation View  
F16SD36



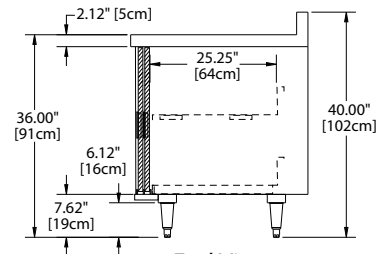
Elevation View  
F16SD48



Elevation View  
F16SD60



Elevation View  
F16SD72



End View  
All Models

Specifications			
Model	# Of Shelves	Shelves Capacity sq. ft.	Ship Weight
F16SD36	2	11.9	260lbs/118kg
F16SD48	2	16.1	305lbs/138kg
F16SD60	2	20.3	395lbs/179kg
F16SD72	2	24.5	440lbs/199kg

F16SD

Welbilt reserves the right to make changes to the design or specifications without prior notice.